

Best Seller

Programmable AC Power Source

ES series

- ▶ Wide Bandwidth
- ▶ Low Noise
- ▶ Stable Output



Price Down

Lineup Single-phase 2 kVA / 4 kVA / 6 kVA and more*

- AC output voltage : 0 to 150 V/0 to 300 V
Frequency : 5 Hz to 1100 Hz
DC output voltage : 0 to + 203 V/0 to + 406 V
- Peak current of 3.5 times of maximum rms value.
- Voltage dips, voltage variations, simultaneous sweeping of frequency and voltage.
- Measurement function, protective circuit, remote sensing, and AGC function.
- Inputs for external signals (ADD, VCA, EXT SIGNAL INPUT)
- Handle reverse power flow

For various tests

- Low Frequency Immunity Test
- Low Frequency Emission Test
- Power conditioner grid interconnection certification Test
- Grid interconnection simulation Power Source
- CVCF for anechoic chamber
- Voltage variation test
- Inrush current test
- Inverter evaluation
- Motor evaluation
- Device evaluation
- Frequency conversion
- Voltage conversion

* For more capacity, please contact us

High quality and stable power

NF offer the optimum solution through many years of experience manufacturing AC power supplies.

Entry Model

It is the best system for those who are first introduced.

EMC

Best seller as the power source for EMC test. A variety of peripheral equipments and software are available

Environment & Energy

ES series can be used for evaluations of the environment and energy field, such as the power conditioner grid interconnection test of solar power generation, fuel cell, and storage battery.



Single-phase 6 kVA



Single-phase 4 kVA



Single-phase 2 kVA

For capacity expansion, please contact us

Performance

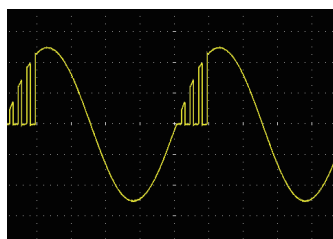
Waveform example

Fast response*

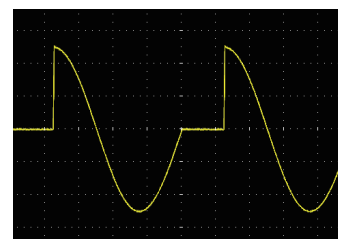
*These are examples using an external signal source.



Commutation notch
(thyristor controlled noise simulation)



Chattering

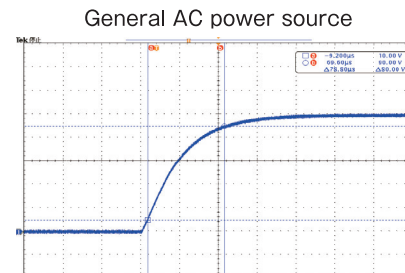
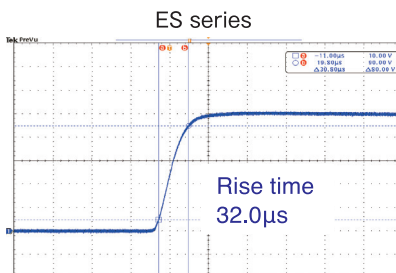


90° phase on

Rise time

Since the rise time is shorter than the general AC power supply, it is possible to output waveforms with fast change with high reproducibility. Preliminary test of voltage dip in low frequency immunity test is possible.

- Conditions : 100 V range, 2 kW load, 100 V output
X axis: 40 μs / div. Y axis: 20 V / div.



Output noise

Compared to general AC power supply, output noise is small, and it is adopted as CVCF for anechoic chamber.

Low distortion

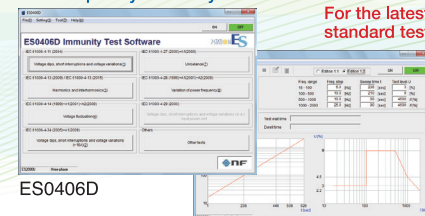
Distortion of 0.3% or less (40 Hz to 100 Hz, rated output voltage, typ.). High quality output waveform can be obtained.

Options

Options / Peripheral equipment

Model	Product name	Description
ES4474A	Remote terminal	Multifunction remote controller (cable length 5 m)
4481	Power Inlet Unit	Divide input power, 4 kVA (Single-phase)/6 kVA (Single-phase)
4482	Output unit	Single-phase 4 kVA or 6 kVA output,
ES0406D	Immunity Test Software	IEC standard test software

Low Frequency Immunity Test



For the latest standard test

The contents of this catalog are current as of April 22, 2019.

- External view and specifications are subject to change without prior notice.
- Please check the latest specifications, prices, and lead time for purchase.
- The company names and product names described here are trademarks or registered trademarks of respective owners.

NF Corporation

Head Office
6-3-20 Tsunashima Higashi, Kohoku-ku, Yokohama 223-8508, Japan
<http://www.nfcorp.co.jp/english/>

NF Techno Commerce Co., Ltd.

International Sales Division
6-3-14 Tsunashima Higashi, Kohoku-ku, Yokohama 223-0052, Japan
Phone : +81-45-777-7604 Fax : +81-45-777-7605