



CONTROL SOFTWARE FOR DP020AGS

INSTRUCTION MANUAL

DA00104985 -001

CONTROL SOFTWARE FOR DP020AGS

Instruction Manual

■ About registered trademarks

National Instruments is a trademark of National Instruments Corporation in the United States.

Microsoft is a registered trademark of Microsoft Corporation in the United States.

Windows is a registered trademark of Microsoft Corporation in the United States.

Other company or product names are generally the trademarks or registered trademarks of their respective holders.

Preface

Thank you for purchasing our Programmable AC Power Source DP020AGS.

For safe and correct use of the electrical product, please first read "Safety Precautions" on the next page.

- This manual consists of the following chapters.

If it is the first time for you to use this product, start with "1. Outline."

1. **Outline:** Provides an overview of the functions of the Control Software.
2. **Installation:** Explains the environment required for Control Software to operate and the installation method.
3. **Control Software Operation:** Explains the basic operations of Control Software, such as starting/exiting, the window configuration, the system setting, and so on.
4. **Basic Controller:** Explains how to operate the "Basic controller" function, one of the primary functions of the Control Software.
5. **Simulation:** Explains how to operate the "Simulation" function, one of the primary functions of the Control Software.
6. **Sequence:** Explains how to operate the "Sequence" function, one of the primary functions of the Control Software.
7. **Measurements Logging:** Explains how to operate the Measurements Logging.
8. **Maintenance:** Explains how to check the version.

- Coverage of the mentioning contents.

The description of this manual applies to products with version 1.00 or above.

For details on checking the version, see Chapter 8.1.

Safety Precautions

For safe use, ensure to obey the following warnings and cautions.

We are not responsible for damage resulting from failure to obey these warnings and cautions.

- Ensure you obey the instructions in this instruction manual.

This instruction manual contains instructions for safe operation and use of this product.

Before using the product, please read this manual first.

All the warning items contained in this instruction manual are intended for preventing risks that may lead to serious accidents. Ensure to obey them.

- If you notice anything strange

If the power system controlled by this product produces smoke, unusual odor, or strange sound, immediately stop using it.

Should you encounter any anomaly like above, make sure the system cannot be used until the repair is completed, and immediately contact us or our agent.

———— **Disclaimer** ————

"Control Software for DP020AGS" (hereinafter abbreviated as "this software") is shipped after being tested and inspected sufficiently by NF Corporation.

Should you encounter any failure caused by a manufacturing defect or accident during transportation, contact us or our agent.

We have no responsibility for any damage caused by using this software. We also are not obligated to provide any modifications or support, if you have problems with this software. Use this software on your own responsibility.

———— **About Copyrights** ————

This software is the copyright of NF Corporation, and is protected under Japanese copyright law and international agreements.

You may make a copy of this software for backup or archival purposes only, or you may retain the original for backup or archival purpose only and install this software onto the hard disk.

You may not reproduce any part of, or all of, this instruction manual without permission.

———— **Contact Us** ————

Should you find any fault or any questions, please contact us or our agent from whom you purchased the product.

When you contact us or our agent, tell us the model name (or product name), version number, and more detailed symptom/condition of use.

Contents

	Page
Preface	i
Safety Precautions	ii
Disclaimer/About Copyrights/Contact US	iii
Table of Contents	iv
List of Figures	viii
List of Tables	ix
1. Outline	1
1.1 Overview	2
1.2 Software Configuration	3
1.3 Conventions Used in This Manual	3
2. Installation	5
2.1 System Requirements	6
2.2 Installation Procedure	7
2.2.1 Installation of Driver Software	7
2.2.2 Installation of Control Software for DP020AGS	7
3. Control Software Operation	9
3.1 Start and Exit	10
3.1.1 Start	10
3.1.2 Exit	10
3.2 Communication with DP Power Source	11
3.3 Composition of Main Window	12
3.4 Function Switching and Function Display Section	12
3.5 Common Display Section	13
3.5.1 Operation Bar	13
3.5.2 Status Monitor	13
3.5.3 Status Bar	13
3.6 System Setting	14
3.6.1 Model Setting	15
3.6.2 Connection Setting	15
3.6.3 Output Setting Tab	16
3.7 Error Message	17
4. Basic Controller	19
4.1 Name of Each Component in the Window	20
4.2 Operations on Each Section	21
4.2.1 Menu Bar	21
4.2.2 Tool Bar	21
4.2.3 Reload and Set Buttons	22
4.2.4 Basic Setting	22

4.2.5	Output Setting	23
4.2.6	Limiter Setting	24
4.2.7	Operation Bar	24
4.3	DP Power Source Setting File	25
4.3.1	Save As	25
4.3.2	Save.....	25
4.3.3	File Reading.....	25
4.4	Memory.....	26
4.4.1	Store	26
4.4.2	Recall.....	26
4.4.3	Reset	26
4.5	Status.....	27
4.5.1	Status Monitor.....	27
4.5.2	Clear	28
4.6	Logging.....	28
5.	Simulation	29
5.1	Name of Each Component in the Window	30
5.2	Operations on Each Section	31
5.2.1	Menu Bar	31
5.2.2	Tool Bar	31
5.2.3	Basic Setting.....	32
5.2.4	Parameter Setting.....	33
5.2.5	Graph.....	34
5.2.6	Operation Bar	34
5.3	Simulation Setting File	35
5.3.1	Save As	35
5.3.2	Save.....	35
5.3.3	File Reading.....	35
5.3.4	Write to USB Memory (Export)	35
5.4	Control	37
5.4.1	Start	37
5.4.2	Stop	37
5.4.3	Output On	37
5.4.4	Output Off	37
5.4.5	Switch Execution Mode	37
6.	Sequence.....	39
6.1	Name of Each Component in the Window	40
6.2	Operations on Each Section	41
6.2.1	Menu Bar	41
6.2.2	Tool Bar	42
6.2.3	Basic Setting.....	42
6.2.4	Step Arrangement.....	43

6.2.5	Step-control Parameter Setting.....	46
6.2.6	Intra-Step Parameter Setting	47
6.2.7	Operation Bar	48
6.3	Sequence Setting File.....	49
6.3.1	Save As	49
6.3.2	Save.....	49
6.3.3	File Reading.....	49
6.3.4	Write to USB Memory (Export)	50
6.4	Control	51
6.4.1	Start	51
6.4.2	Stop	51
6.4.3	Hold	51
6.4.4	Branch	51
6.4.5	Output On	51
6.4.6	Output Off	51
6.4.7	Switch Execution Mode	52
7.	Measurements Logging	53
7.1	Open or Close the Measurements Logging Window	54
7.1.1	Open the Measurements Logging Window.....	54
7.1.2	Close the Measurements Logging Window	54
7.2	Name of Each Component in the Window	54
7.3	Operations on Each Section	55
7.3.1	Menu Bar	55
7.3.2	Tool Bar	55
7.3.3	Start, Stop, and Clear	56
7.3.4	Logging Conditions	56
7.4	Log Display Section	57
7.5	Measurements Log File	57
8.	Maintenance	59
8.1	Check Version	60

Figures and Tables

■List of Figures

	Page
Figure 3-1 Shortcut Icon on Desktop	10
Figure 3-2 Exit Confirmation Dialog.....	10
Figure 3-3 Dialog that Opens when the Software was Started in Communication Offline State	11
Figure 3-4 Composition of Main Window	12
Figure 3-5 Operation Bar	13
Figure 3-6 Status monitor	13
Figure 3-7 Status Bar.....	13
Figure 3-8 System Setting Dialog	14
Figure 3-9 Example of when unconfirmed Dialog	14
Figure 3-10 System Setting Dialog (Output Setting)	16
Figure 4-1 Basic Controller Window	20
Figure 4-2 Menu Composition of Basic Controller	21
Figure 4-3 Basic Controller Tool Bar	21
Figure 4-4 Reload and Set Buttons	22
Figure 4-5 Basic Setting	22
Figure 4-6 Confirmation Dialog for Clearing the Setting	22
Figure 4-7 Output Setting	23
Figure 4-8 Example of Setting Range Error Dialog	23
Figure 4-9 Limiter Setting	24
Figure 4-10 The Indication of OUTPUT Button.....	24
Figure 4-11 Store and Recall Dialogs.....	26
Figure 4-12 Status Display Example (Sensing Voltage Anomaly).....	27
Figure 5-1 Simulation Window	30
Figure 5-2 Menu Composition of the Simulation.....	31
Figure 5-3 Simulation Tool Bar	31
Figure 5-4 Basic Setting (Mode, Range, and Repeat)	32
Figure 5-5 Confirmation Dialog for Clearing the Setting	32
Figure 5-6 Basic Setting (Trigger Setting)	32
Figure 5-7 Parameter Setting	33
Figure 5-8 Setting of Start Phase and Stop Phase.....	33
Figure 5-9 Graph	34
Figure 5-10 Operation Bar of the Simulation	34
Figure 6-1 Sequence Window	40
Figure 6-2 Menu Composition of Sequence	41
Figure 6-3 Sequence Tool Bar.....	42
Figure 6-4 Basic Setting (Output Mode and Output Range).....	42

Figure 6-5 Confirmation Dialog for Clearing the Setting	42
Figure 6-6 Basic Setting (Trigger Setting)	43
Figure 6-7 Step Arrangement Buttons	43
Figure 6-8 Confirmation Dialog for Deleting a Step	43
Figure 6-9 Error Dialog for Copying Data	45
Figure 6-10 Enabling or Disabling Start Phase and Stop Phase	46
Figure 6-11 Set Behavior Type	47
Figure 6-12 Operation Bar of Sequence	48
Figure 7-1 Measurements Logging Window	54
Figure 7-2 Menu Composition of the Measurements Logging	55
Figure 7-3 Measurements Logging Tool Bar	55
Figure 7-4 Logging Setting Dialog	56
Figure 8-1 System Setting Dialog Window	60

■List of Tables

	Page
Table 2-1 System Requirements	6
Table 4-1 Status Display List	27

1. Outline

1.1	Overview	2
1.2	Software Configuration	3
1.3	Conventions Used in This Manual	3

1.1 Overview

This Software is a program to support the Remote control, Sequence, and Simulation functions of Programmable AC Power Source DP020AGS(hereinafter abbreviated as "DP power source"). This software works on Windows (10 or 11) running on a personal computer (PC), and can transfer the output control data, sequence data, and simulation data to the DP power source through USB or LAN, or perform various functions on the DP power source.

The major functions of this Software are listed below. For detailed operations of the Sequence and Simulation functions, refer to the instruction manual of Programmable AC Power Source DP020AGS.

- Basic operation function

- Remote control
- Status monitor
- Measurements Logging

- Sequence function

- Creating, editing, and saving the Sequence data
- Transferring the Sequence data to the DP power source
- Execution control of Sequence function on the DP power source
- Monitor display during Sequence execution
- Exporting the file for DP power source

- Simulation function

- Creating, editing, and saving the Simulation data
- Transferring the Simulation data to the DP power source
- Execution control of Simulation function on the DP power source
- Monitor display during Simulation function execution
- Exporting the file for DP power source

1.2 Software Configuration

This Software consists of three major functions displayed on the same screen.

- Major functions
 - Basic controller
 - Sequence function
 - Simulation function
- Tool functions
 - Logging function

1.3 Conventions Used in This Manual

This manual uses the following conventions to describe the functions of Control Software for DP Series.

- Menu names displayed on the screen, and user-input text: block letters enclosed by [].
Example: [Wave], [s=2*pi;]
- Button names displayed on the screen, and keys that user should press: block letters enclosed by .
Example: Cancel, OK, Alt
- String that represents each function or item of this software: block letters enclosed by " ".
Example: "Basic controller", "DP power source setting file"
- Press one key while holding down another key: Two keys are connected by "+".
Example: Ctrl + O
- Press one key, release it and press another key: Two keys are connected by ", ".
Example: Alt, F

2. Installation

2.1	System Requirements	6
2.2	Installation Procedure.....	7

2.1 System Requirements

Make sure that your system satisfies the requirements described in Table 2-1, before installing this software.

Table 2-1 System Requirements

Item	Description
OS	Windows 10 (64-bit) / 11 (64-bit) English
Display	1920 x 1080 pixel or higher, 256 colors or more
Free hard disk drive space	64 MB or more
Communication interface	USB / LAN
Software component	Microsoft .NET Framework 4.8
	VISA environment
	See “2.2.1 Installation of Driver Software”

----- Notes -----

- This software might not operate properly depending on the conditions of your operating system.

■ About software component

In most cases, .NET Framework 4.8 component is already installed in Windows 10/11.

When this software is installed, this software checks whether .NET Framework 4.8 is installed in your computer, and if it is not, it displays a message prompting to install the component. If the computer is connected to Internet, the software automatically downloads .NET Framework 4.8 and installs it.

2.2 Installation Procedure

To install/uninstall this software, log on to Windows with Administrator permissions.

To establish the communication connection between this software and the DP power source, the USB driver software or the VISA environment must be installed.

2.2.1 Installation of Driver Software

If the VISA environment is set up in your computer, the USB driver software is already installed.

VISA (Virtual Instrument Software Architecture) is a standard recommended by the IVI Foundation to promote the standardization of instrument software architecture.

If the VISA environment is set up in your computer, you can use this software in the VISA environment. This software is confirmed to work on NI-VISA Version 2023 Q3(NI-VISA.NET) provided by National Instruments Corporation. Please be aware that we do not provide support for problems that occur in the VISA environment provided by other vendor products.

If you want to use this software in the NI-VISA environment, you must obtain the license yourself from National Instruments Corporation. For details of NI-VISA, contact National Instruments Corporation or visit the National Instruments Website.

2.2.2 Installation of Control Software for DP020AGS

■ Installation procedure

1. Run setup.exe. The installer will start.
2. Follow the instructions shown in the dialog box to click the **Next** and install the software.
3. After installation, you can perform this software (☞ 3.1).

■ Uninstallation procedure

In Windows, select [Control Panel], and then [Programs and Features]. From the list of currently installed programs, select "Control Software for DP020AGS" and delete it.

However, the folder where this software is installed is not removed. The folder still contains the operation setting file of this software, and deleting this folder and its files after uninstallation does not cause any problem.

3. Control Software Operation

3.1	Start and Exit.....	10
3.2	Communication with DP Power Source	11
3.3	Composition of Main Window	12
3.4	Function Switching and Function Display Section.....	12
3.5	Common Display Section	13
3.6	System.....	14
3.7	Error Message	17

3.1 Start and Exit

This section explains how to start and exit the software.

3.1.1 Start

Following two methods are available. The desktop shortcut is automatically created when the software is installed.

- Double-click the shortcut icon on the desktop (Figure 3-1).
- From the Start menu, select [Start] - [All Programs] - [NF] - [Control Software for DP020AGS].



Figure 3-1 Shortcut Icon on Desktop

3.1.2 Exit

Following three methods are available. When you perform the exit operation, the dialog opens as shown in Figure 3-2. To exit, select **Yes**. To cancel exiting, select **No**.

- Click the **X** button in the upper right corner of the window.
- With the window selected, press **Alt** + **F4** on the keyboard.
- From the Menu Bar, select **[File]** - **[Exit]**.

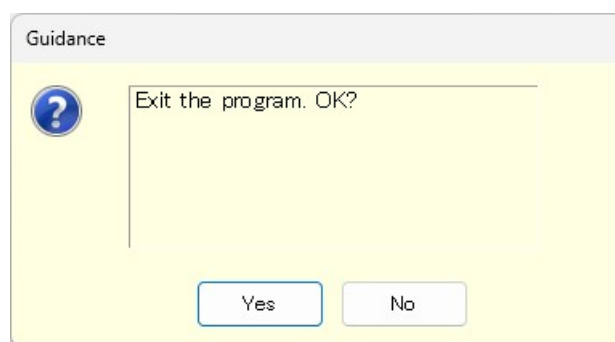


Figure 3-2 Exit Confirmation Dialog

3.2 Communication with DP Power Source

This software can set and control the DP power source connected via USB or LAN, by communicating with it. To distinguish from the state in which the computer and DP power source are just connected physically using a USB cable or a LAN cable, "communication online state" is used to describe that the communication is established between the software and a DP power source. The state in which the communication is not established between them is called "communication offline state".

■ Start in the communication offline state

This software checks the communication connection with the DP power source when it is started.

When the communication connection with the DP power source is established, the software retrieves the parameter settings of Basic controller from the DP power source, and displays them on the PC screen.

This behavior is not affected by parameter of the model settings in the System Setting dialog.

The setting ranges for the following parameters are linked depending on the system configuration of the connected DP power source.

- CV mode current limiter
- CC mode output current setting and setting range limitations
- CC mode external input gain

■ Start in the communication offline state

When the software is started, it attempts to communicate with the DP power source. If the communication cannot be established, it starts in the communication offline state. In this case, a dialog opens as shown in Figure 3-3.

In the communication offline state, the DP power source cannot be controlled from the computer. The setting data and sequence data can still be created and saved to file. At this time, change the communication settings to OFFLINE and this software will operate under the configuration conditions specified in the environment settings dialog (☞ 3.6).

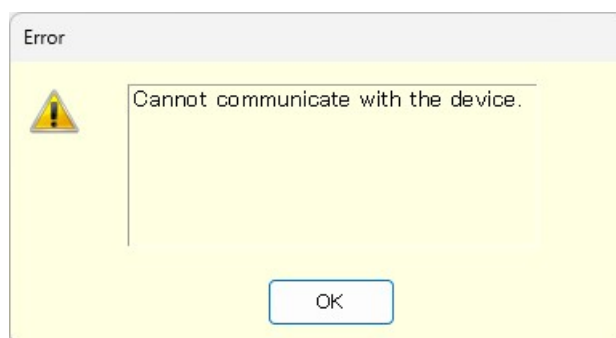


Figure 3-3 Dialog that Opens when the Software was Started in Communication Offline State

■ DP power source communication interface settings

When communicating with a DP power source, the communication interface of the DP power source must be set to "USB" or "LAN" in advance. For the setting method, please refer to the instruction manual of the DP power source.

3.3 Composition of Main Window

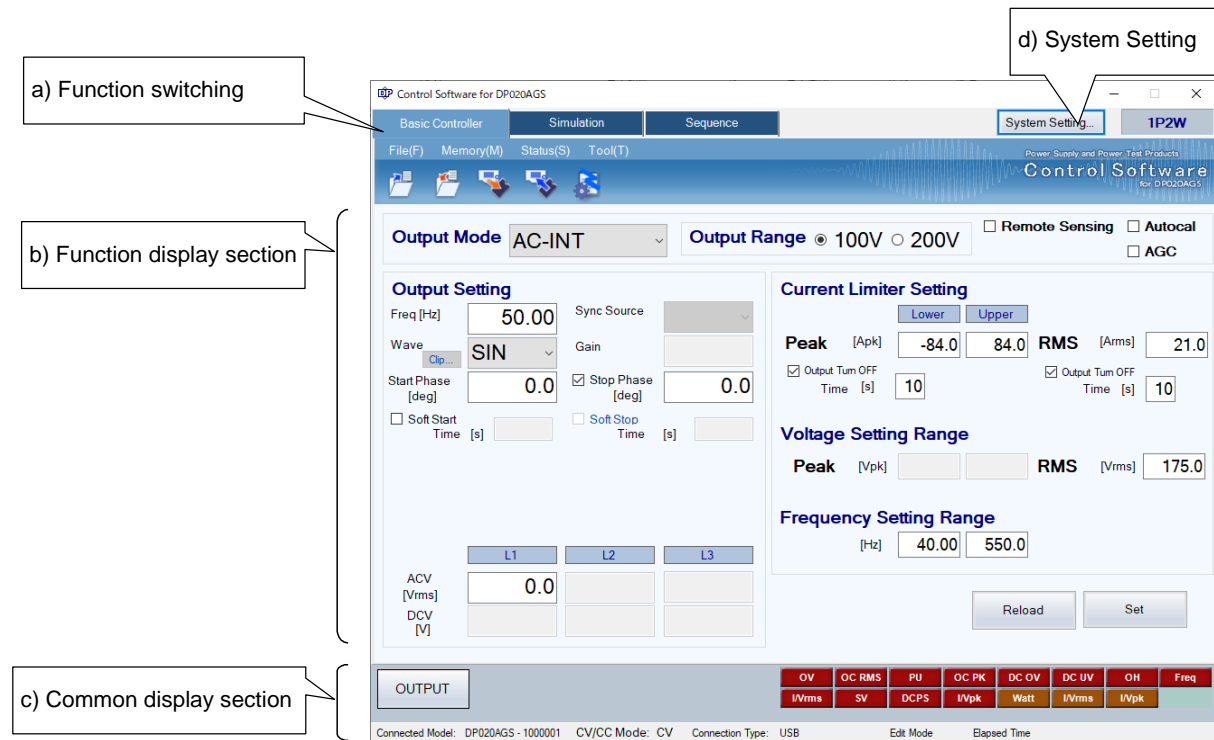








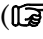
Figure 3-4 Composition of Main Window

- | | |
|-----------------------------|--|
| a) Function switching |  3.4 |
| b) Function display section |  3.4 |
| c) Common display section |  3.5 |
| d) System Setting |  3.6 |

3.4 Function Switching and Function Display Section

With this software, you can use three types of functions by switching among them.

When you click a function switching tab, items corresponding to that function are displayed in the function display section.

- Basic controller ( 4)
- Simulation ( 5)
- Sequence ( 6)

3.5 Common Display Section

The common display section is shown commonly to all functions.

3.5.1 Operation Bar

The Operation Bar has the output ON/OFF switching button and other buttons for various function operations.



Figure 3-5 Operation Bar

3.5.2 Status Monitor

The status monitor indicates the status of the currently connected DP power source.

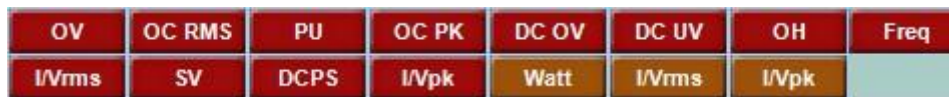


Figure 3-6 Status monitor

3.5.3 Status Bar

The status bar indicates the states of the DP power source connection and the software.

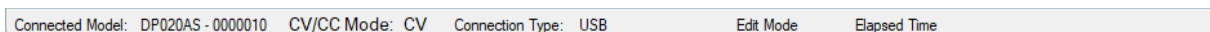


Figure 3-7 Status Bar

- **Connected Model**
Shows the model name of the DP power source set in the System Settings.
When connected to a DP power source, shows the serial number or IP address of the connected DP power source.
- **CV/CC mode**
Shows the CV/CC mode of the DP power source.
- **Connection Type**
Shows the connection mode with the DP power source set in the System Settings.
- **Edit Mode/Control Mode**
Shows the execution mode for the sequence or simulation (see 5.4.5, 6.4.7).
- **Elapsed Time**
Shows the time elapsed after the sequence or simulation was started.

3.6 System Setting

When you first use this software, system setting is needed. Click the **System Setting** button in the upper right corner of the window to open the System Setting dialog as shown in Figure 3-8.

You can change the system setting whenever the software is up and running. However, changing the system setting clears parameters and other settings that are being edited.

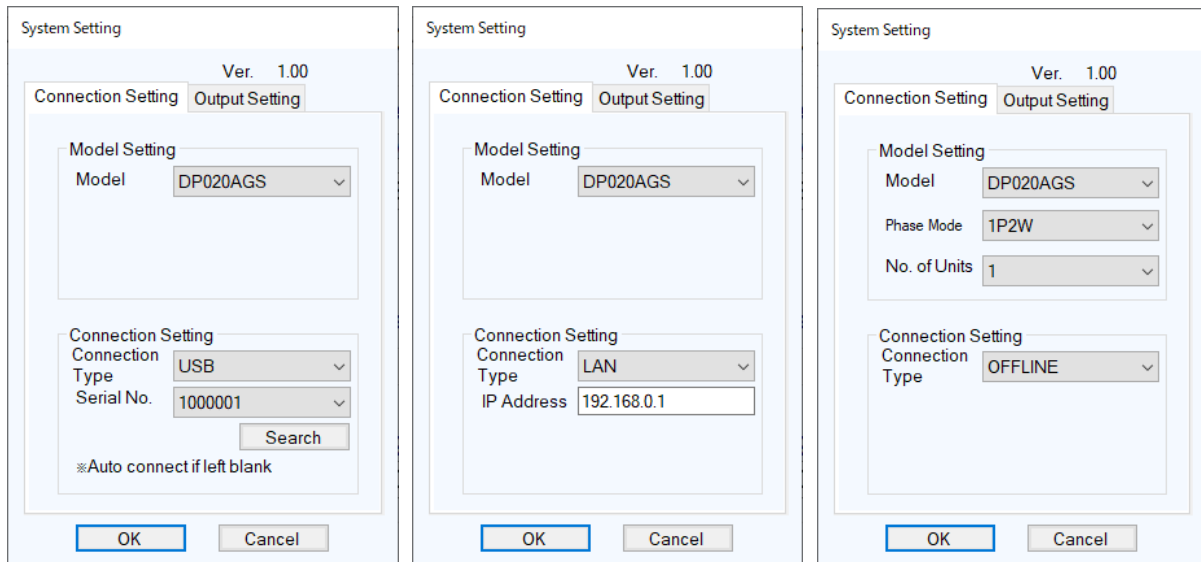


Figure 3-8 System Setting Dialog

The System Setting dialog has tabs for **Connection Setting** and **Output Setting**.

If change settings on either tab, confirm the settings with OK. If you change it and try to select the other tab, the following message will be displayed and you will not be able to move.

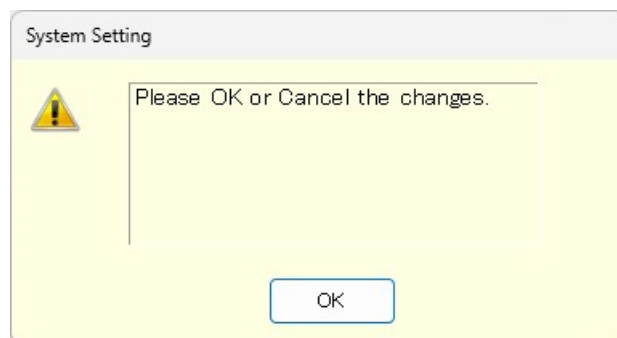


Figure 3-9 Example of when unconfirmed Dialog

3.6.1 Model Setting

If select [Offline] for the **Connection Type** in the next section, set the **Model** name, **Phase Mode**, and **Number of Connected Units**. Set the model, phase mode, and working power unit configurations of the DP power source to connect. These configurations you have set are shown in the upper frame of the main window. The range of parameters you can set in the function display section is changed based on the phase mode and working power unit configurations specified here. When communication is connected, this software operates according to the system configuration of the DP power source, not the settings in this area.

a) Model

Fixed to DP020AGS.

b) Phase Mode

Set the output phase configuration of the DP power source.

c) No. of Units

Set the number of devices connected to the DP power source.

3.6.2 Connection Setting

a) Connection Type

Specify the type of communication with the DP power source to connect. Select the driver software to use (USB, LAN or OFFLINE). The set communication type is shown in the status bar (☞ 3.5.3).

If OFFLINE is selected, this software operates according to the settings in the model setting area. (☞ 3.6.1).

If communication with the DP power source cannot be established, the same operation as with the OFFLINE setting will be performed. If communication with the DP power source is established, this software displays the Basic Controller screen.

b) Serial Number

Set the Serial Number when the connection type is USB.

If the serial number is blank, the DP power source connected to the PC will be searched and communication will be performed with the first DP power source found. The serial number can be entered by selecting it from the serial number list.

Click the Search button to display a list of serial numbers by searching for DP power source connected to the PC.

c) IP address setting

Set the IP address when the connection type is LAN. The input value is shown at “Remote Setting Window” of the DP power source. (About “Remote Setting Window”, see the instruction manual (remote control) of the DP power source.)

Notes

- If you push **OK** button on power unit errors, this software checks the error status of power units after setting.
- If there is some errors, this dialog does not close and show the status. This dialog will close when you push the button after removing the factor of errors. And the error status of the DP power source will be cleared when the dialog close.

Notes

- When the DP power source connects to the network with a DHCP server and LAN connectivity often interrupts, use the fixed IP address. About using the fixed IP address, see the instruction manual (remote control) of the DP power source.

3.6.3 Output Setting Tab

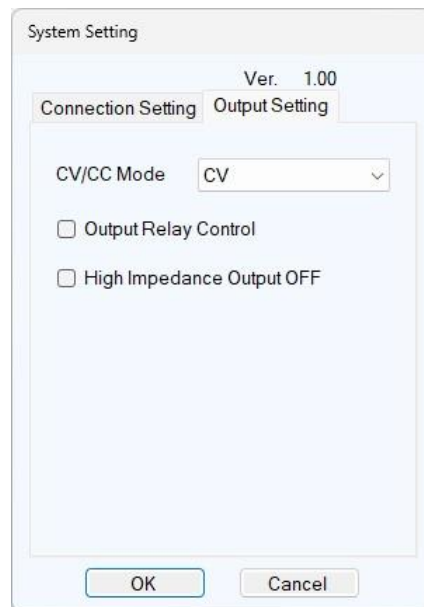


Figure 3-10 System Setting Dialog (Output Setting)

a) CV/CC Mode

Set the CV/CC mode of the DP power source.

In the Online state, if CC mode is disabled on the DP power source side, it cannot be set to "CC".

b) Output Relay Control

Set enable/disable of output relay control of DP power source.

c) Hi-Z Output Off

Sets enable/disable of high impedance output off of DP power source.

----- **Notes** -----

- For DP power source that do not support CC mode, only CV mode can be set.
 - In the Basic Controller settings, there are parameters that are affected by the items on this Output Setting tab.
-

3.7 Error Message

You might see some error message in the dialog while using the software. In that case, handle the error according to the instruction described in the message.



4. Basic Controller

4.1	Name of Each Component in the Window.....	20
4.2	Operations on Each Section	21
4.3	DP Power Source Setting File	25
4.4	Memory	26
4.5	Status	27
4.6	Logging	28

4.1 Name of Each Component in the Window

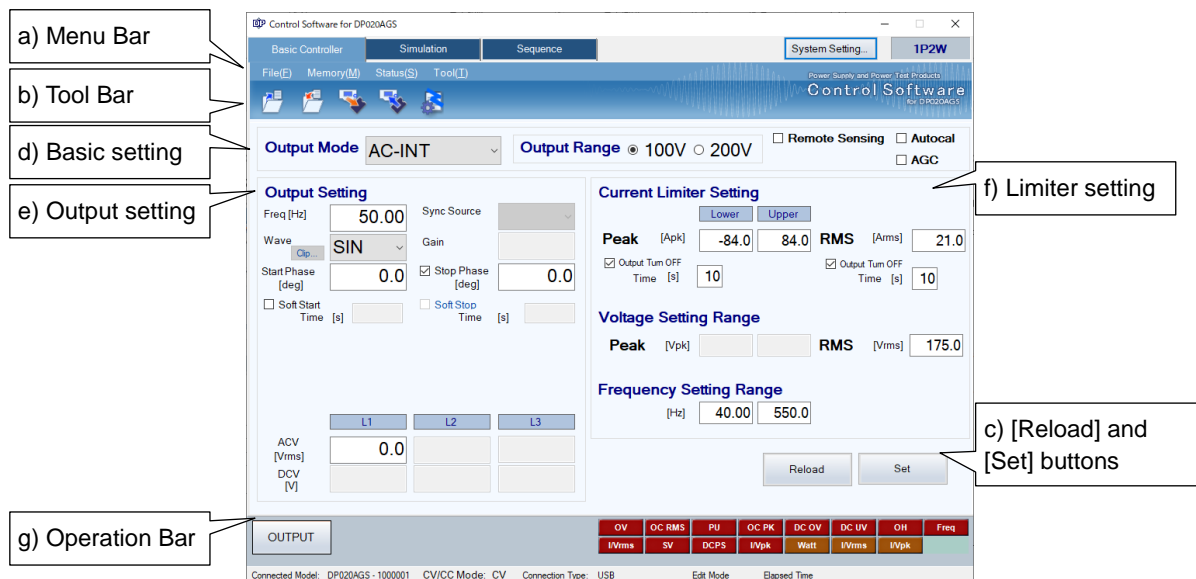


Figure 4-1 Basic Controller Window

- | | |
|-------------------------------|---------|
| a) Menu Bar | ☞ 4.2.1 |
| b) Tool Bar | ☞ 4.2.2 |
| c) [Reload] and [Set] buttons | ☞ 4.2.3 |
| d) Basic setting | ☞ 4.2.4 |
| e) Output setting | ☞ 4.2.5 |
| f) Limiter setting | ☞ 4.2.6 |
| g) Operation Bar | ☞ 4.2.7 |

4.2 Operations on Each Section

This section explains how to operate each section assuming that the operation is performed in the communication online state. In the communication offline state, some functions are restricted because the DP power source status cannot be obtained.

Based on the DP power source status, you may encounter an error message when setting an item. In that case, handle the error according to the message content.

4.2.1 Menu Bar

The menu composition of [Basic Controller] is shown in Figure 4-2.

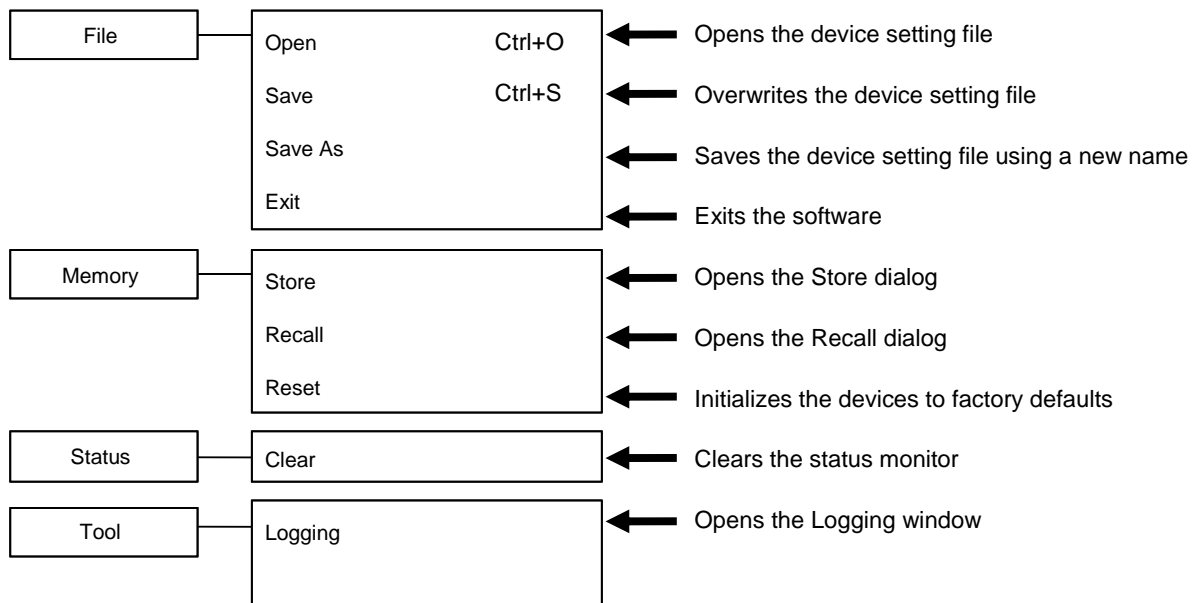


Figure 4-2 Menu Composition of Basic Controller

4.2.2 Tool Bar

On the [Basic Controller] Tool Bar, you just click each icon shown in Figure 4-3 to execute the corresponding function.



Figure 4-3 Basic Controller Tool Bar

- | | |
|------------|--|
| a) Open | Opens the DP power source setting file. |
| b) Save | Overwrites and saves the DP power source setting file. |
| c) Store | Opens the Store window. |
| d) Recall | Opens the Recall window. |
| e) Logging | Opens the Logging window. |

4.2.3 Reload and Set Buttons

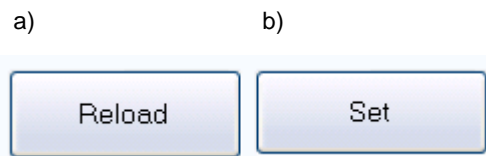



Figure 4-4 Reload and Set Buttons

- a) [Reload] button Obtains the basic, output, and limiter settings from the connected DP power source, and updates the setting values for the windows of the software.
- b) [Set] button Sets the basic, output, and limiter settings entered in the windows of the software to the connected DP power source.

4.2.4 Basic Setting



Figure 4-5 Basic Setting

- a) Output mode Click , and select from the output mode list that opens.
- b) Output range Click the radio button to switch the selection.
- c) Remote Sensing/Autocal/AGC Select the check box to enable each function.

When the output mode or output range setting is changed, the confirmation dialog opens as shown in Figure 4-6. In the communication online state, if **Yes** is selected, the software asks the DP power source for each setting value after the change process of output mode or output range of the connected DP power source is completed, then updates the setting values displayed in the window. In the communication offline state, each setting value is cleared to the default value held by the software. When you select **No**, the change to the output mode or output range is canceled.

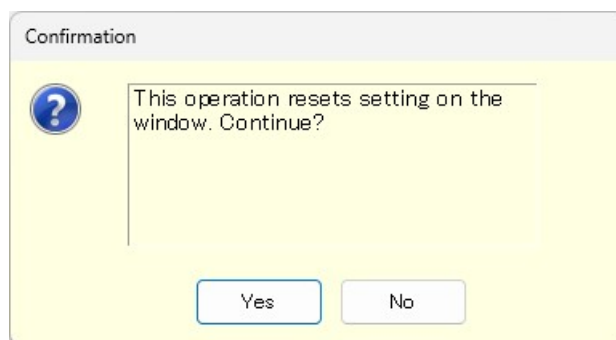
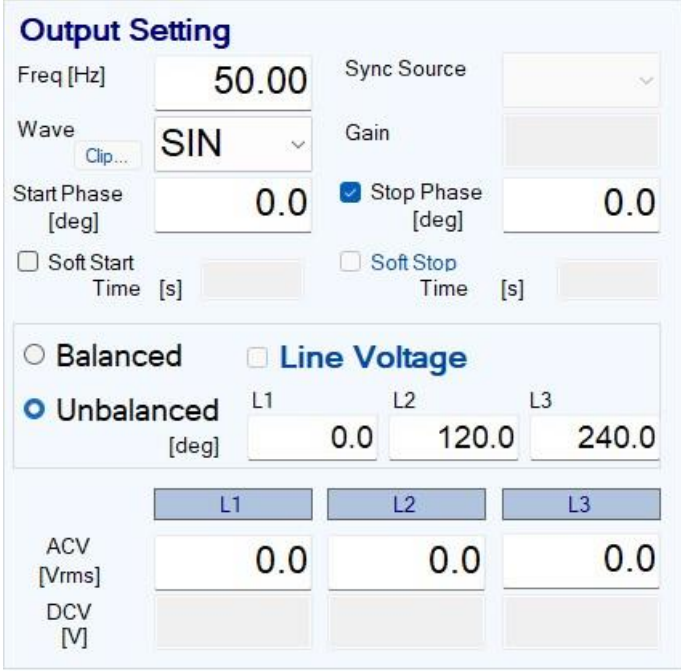


Figure 4-6 Confirmation Dialog for Clearing the Setting

When you change the output mode or output range setting, it may take some time until the setting is switched depending on the settings of the connected DP power source.

4.2.5 Output Setting

Set the output-related items. A grayed item is not available in this output mode.



Output Setting

Freq [Hz] Sync Source

Wave Clip... Gain

Start Phase [deg] ☒ Stop Phase [deg]

☐ Soft Start Time [s] ☐ Soft Stop Time [s]

☐ Balanced ☐ Line Voltage

☒ Unbalanced [deg] L1 L2 L3

	L1	L2	L3
ACV [Vrms]	<input type="text" value="0.0"/>	<input type="text" value="0.0"/>	<input type="text" value="0.0"/>
DCV [V]	<input type="text" value=""/>	<input type="text" value=""/>	<input type="text" value=""/>

Figure 4-7 Output Setting

In a numerical entry box, if the entered value is out of the setting range, the error dialog opens as shown in Figure 4-8. Enter a value within the setting range shown in the dialog. For details of the setting range, see the instruction manual of the DP power source.

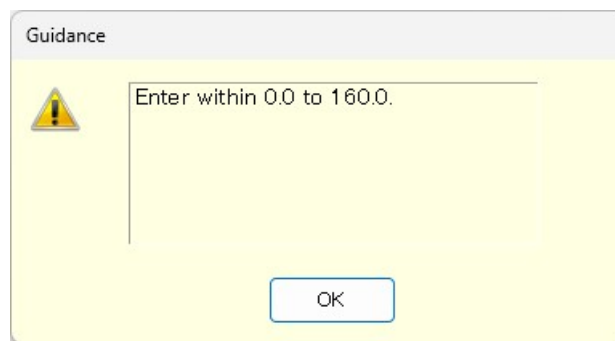


Figure 4-8 Example of Setting Range Error Dialog

4.2.6 Limiter Setting

In the limiter setting, you set the limiters and the restriction on the setting ranges.

The screenshot displays the 'Limiter Setting' window with three main sections:

- Current Limiter Setting:** Includes 'Lower' and 'Upper' tabs. The 'Peak' [Apk] is set to -84.0 and 84.0. The 'RMS' [Arms] is set to 21.0. There are two checkboxes for 'Output Turn OFF' with a 'Time [s]' of 10.
- Voltage Setting Range:** The 'Peak' [Vpk] is set to empty boxes. The 'RMS' [Vrms] is set to 175.0.
- Frequency Setting Range:** The frequency [Hz] is set to 40.00 and 550.0.

Figure 4-9 Limiter Setting

In a numerical entry box of the limiter setting, if the entered value is out of the setting range, the error dialog opens as shown in Figure 4-8. The range of limiter values held by this software is the value when the maximum number of power units are energized.

4.2.7 Operation Bar

In the Operation Bar, clicking **OUTPUT** toggles between output on and off of the connected DP power source. The indication of the **OUTPUT** button changes as shown in Figure 4-10.

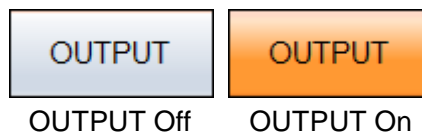


Figure 4-10 The Indication of OUTPUT Button

4.3 DP Power Source Setting File

This Software handles the following one type of file format as the Basic controller setting file.

■ DP power source setting file (extension is RMT)

This file stores the Basic controller settings except the output ON/OFF setting. This file can be read and saved by this software. It cannot be read by the DP power source.


4.3.1 Save As

Saves the DP power source setting file as a new file. The [Save As] dialog can be opened by any of the following two methods. For newly created data, the Save operation works as "Save As."

- From the Menu Bar, select [File] - [Save As].
- On the keyboard, press **Alt**, **F**, **A**.

4.3.2 Save

Overwrites and saves to the existing DP power source setting file. Following four methods are available. For newly created data, the Save operation works as "Save As."

- From the Menu Bar, select [File] - [Save].
- On the keyboard, press **Alt**, **F**, **S**.
- On the keyboard, press **Ctrl** + **S**.
- On the Tool Bar, click the [Save] icon ( 4.2.2).

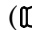
4.3.3 File Reading

Opens the DP power source setting file. The Open File dialog can be opened by any of the following three methods.

- From the Menu Bar, select [File] - [Open].
- On the keyboard, press **Alt**, **F**, **O**.
- On the keyboard, press **Ctrl** + **O**.

----- Notes -----

- About CV/CC Mode, Output Relay Control, and Hi-Z output setting

If the read DP power source setting file and the DP power source's settings are different, reading will be canceled and a message indicating that the parameters are different will be displayed. If such a message is showed, change the DP power source's settings in [System Setting] ( 3.6.3) and then try the read operation again.

4.4 Memory

This section explains the method to communicate with the DP power source and access or reset the basic setting memory (internal memory).

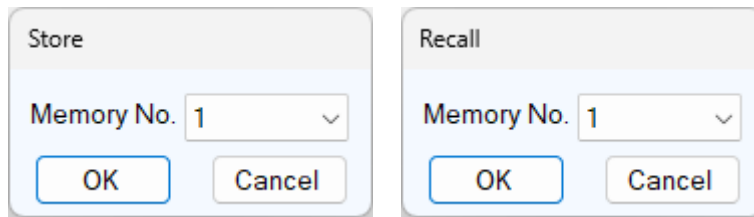


Figure 4-11 Store and Recall Dialogs

4.4.1 Store

The Store dialog can be opened by any of the following two methods. In the Store dialog, specify the internal memory number from the [Memory No.] list, and then click **OK** to execute the store processing on the DP power source.

- From the Menu Bar, click [Memory] - [Store].
- On the Tool Bar, click the [Store] icon (☞ 4.2.2).

4.4.2 Recall

The Recall dialog can be opened by any of the following two methods. In the Recall dialog, specify the memory number from the [Memory No.] list, and then click **OK** to execute the recall processing on the DP power source. After the DP power source finishes the recall processing, the software inquires the DP power source, and updates each setting value in the windows of the software to the recalled value.

- From the Menu Bar, click [Memory] - [Recall].
- On the Tool Bar, click the [Recall] icon (☞ 4.2.2).

----- Notes -----

- Performing the recall operation with the output on results in an error.

4.4.3 Reset

From the Menu Bar, click [Memory] - [Reset]. The connected DP power source is reset to the factory defaults.

----- Notes -----

- Performing the reset operation with the output on results in an error.

4.5 Status

4.5.1 Status Monitor

The software inquires the connected DP power source for the statuses with the interval of about two seconds, and refreshes the display of the status monitor while the output of the DP Power Source is on. Table 4-1 shows the list of statuses to be monitored.

After the DP power source status inquiry, the applicable status (i.e., the status is ON) illuminates in red or orange. Figure 4-12 shows the example of status display.

When a red status is ON, the protection function is activated on the DP power source main unit, causing an error. Under this situation, if you try to change the output setting (☞ 4.2.5) or limiter setting (☞ 4.2.6) without clearing the status (☞ 4.5.2), an error occurs.

Table 4-1 Status Display List

Notation	Description	Display color when it is ON
OV	Output overvoltage	Red
OC RMS	Output overcurrent [RMS]	
PU	Power unit internal anomaly	
OC PK	Output overcurrent [peak]	
DC OV	Power unit DC power supply overvoltage	
DC UV	Power unit DC power supply undervoltage	
OH	Overheat	
Freq	Synchronization frequency anomaly	
I/Vrms	Output OFF after RMS current limiter or voltage limiter is activated	
SV	Sensing voltage anomaly	
DCPS	Power unit DC power supply anomaly	
I/Vpk	Output OFF after peak current limiter or voltage limiter is activated	
Watt	Wattage limiter is operating	Orange
I/Vrms	RMS current limiter is operating or RMS voltage limiter is operating	
I/Vpk	Peak current limiter is operating or Peak voltage limiter is operating	



OUTPUT Off OUTPUT On

Figure 4-12 Status Display Example (Sensing Voltage Anomaly)

4.5.2 Clear

From the Menu Bar, click [Status] - [Clear]. This makes the status monitor display to go off in the windows of the software and clears the DP power source error (equivalent to pressing the ENTER key for an error message window).

4.6 Logging

- Open the [Logging] window (☞ 7). Following two methods are available.
- From the Menu Bar, click [Tool] - [Logging].
- On the Tool Bar, click the [Logging] icon (☞ 4.2.2).

5. Simulation

5.1	Name of Each Component in the Window.....	30
5.2	Operations on Each Section	31
5.3	Simulation Setting File.....	35
5.4	Control	37

5.1 Name of Each Component in the Window

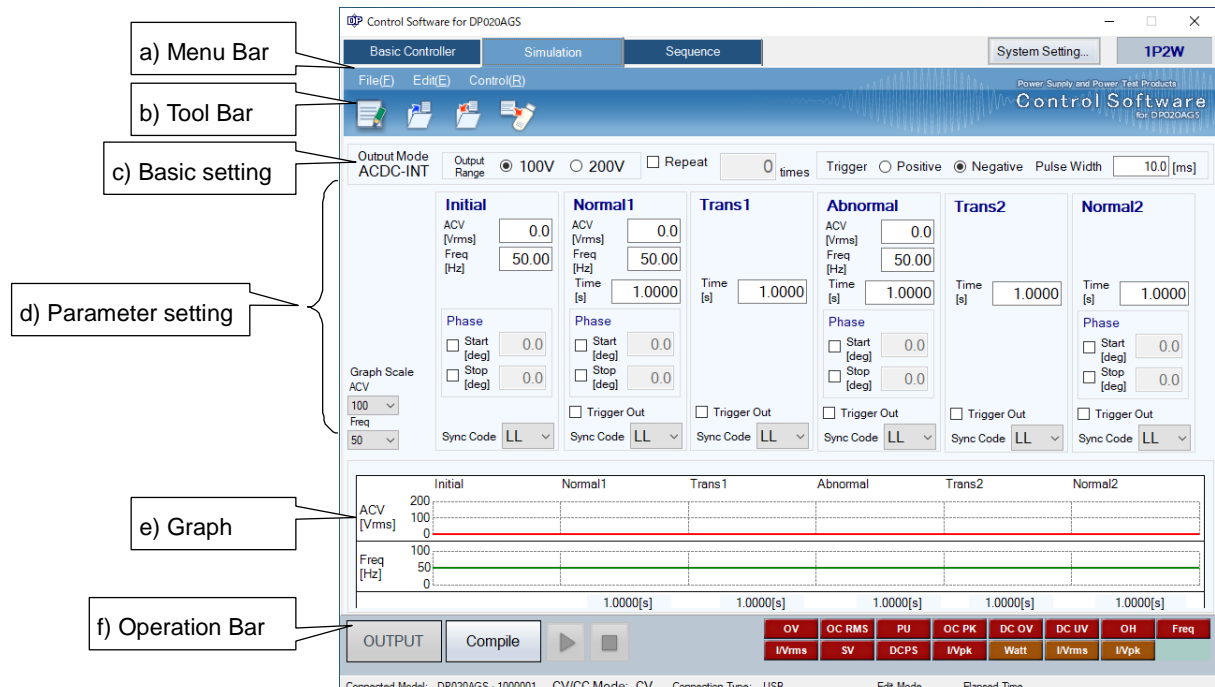


Figure 5-1 Simulation Window

- | | |
|----------------------|-------|
| a) Menu Bar | 5.2.1 |
| b) Tool Bar | 5.2.2 |
| c) Basic setting | 5.2.3 |
| d) Parameter setting | 5.2.4 |
| e) Graph | 5.2.5 |
| f) Operation Bar | 5.2.6 |

5.2 Operations on Each Section

This section explains how to operate each section assuming that the operation is performed in the communication online state. In the communication offline state, some functions are restricted because the DP power source status cannot be obtained.

Based on the DP power source status, you may encounter an error message when setting an item. In that case, handle the error according to the message content.

5.2.1 Menu Bar

The menu composition of [Simulation] is shown in Figure 5-2.

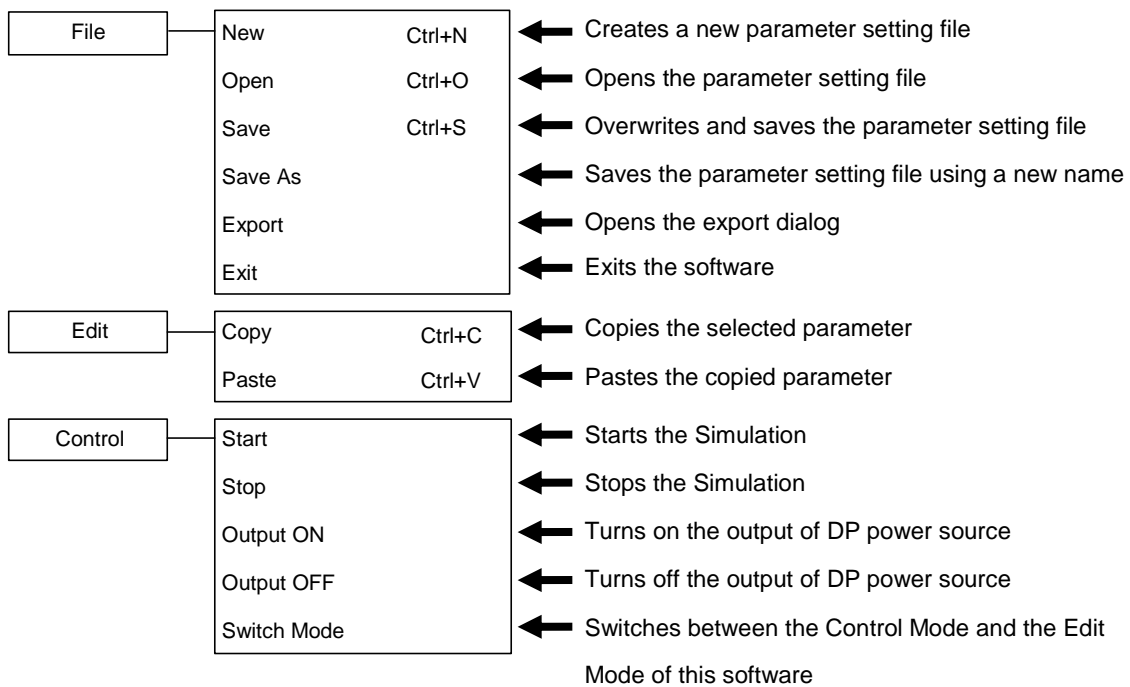


Figure 5-2 Menu Composition of the Simulation

5.2.2 Tool Bar

On the Simulation Tool Bar, you just click each icon shown in Figure 5-3 to execute the corresponding function.

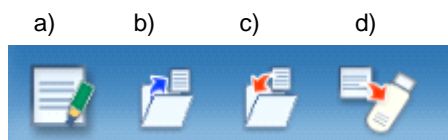


Figure 5-3 Simulation Tool Bar

- | | | |
|----|--------|---|
| a) | New | Creates a new simulation setting. |
| b) | Open | Opens the simulation setting file. |
| c) | Save | Overwrites and saves the simulation setting file. |
| d) | Export | Writes a simulation data file for the USB memory to the USB memory. |

5.2.3 Basic Setting

■ Output mode and Output range



Figure 5-4 Basic Setting (Mode, Range, and Repeat)

In a simulation, the output mode is always fixed as "ACDC-INT" and cannot be changed.

The output range setting can be changed using the radio button. Switch the radio button to display the dialog shown in Figure 5-5. Select **Yes** to clear each of the current setting values (reset to the default values). The cleared setting cannot be undone. If you want to save the current setting before clearing it, select **No** to cancel the change of the output range and then save the setting to a file (☞ 5.3).

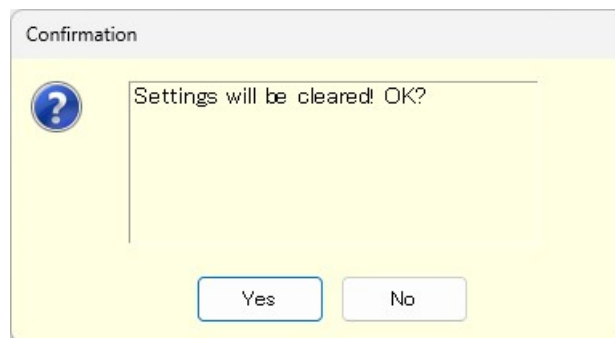


Figure 5-5 Confirmation Dialog for Clearing the Setting

■ Repeat

To enable the repeat of the simulation, select the check box and enter a repeat count. When you enter the repeat count, the software checks if the entered value is within the range. If the entered value is out of the range, the error dialog appears. Enter a value according to the dialog.

■ Trigger setting



Figure 5-6 Basic Setting (Trigger Setting)

Select a polarity from [Positive] or [Negative] and then enter a pulse width. When you enter the pulse width, the software checks if the entered value is within the range. If the entered value is out of the range, the error dialog appears. Enter a value according to the dialog.

5.2.4 Parameter Setting

Initial	Normal1	Trans1	Abnormal	Trans2	Normal2
ACV [Vrms]: 0.0	ACV [Vrms]: 0.0		ACV [Vrms]: 0.0		
Freq [Hz]: 50.00	Freq [Hz]: 50.00		Freq [Hz]: 50.00		
Time [s]: 0.1000	Time [s]: 0.1000	Time [s]: 0.1000	Time [s]: 0.1000	Time [s]: 0.1000	Time [s]: 0.1000
Phase: Start [deg]: 0.0, Stop [deg]: 0.0	Phase: Start [deg]: 0.0, Stop [deg]: 0.0		Phase: Start [deg]: 0.0, Stop [deg]: 0.0		Phase: Start [deg]: 0.0, Stop [deg]: 0.0
Trigger Out: <input type="checkbox"/>	Trigger Out: <input type="checkbox"/>	Trigger Out: <input type="checkbox"/>	Trigger Out: <input type="checkbox"/>	Trigger Out: <input type="checkbox"/>	Trigger Out: <input type="checkbox"/>
Sync Code: LL	Sync Code: LL	Sync Code: LL	Sync Code: LL	Sync Code: LL	Sync Code: LL

Figure 5-7 Parameter Setting

For a numerical entry box, the error dialog opens if the entered value is out of the setting range. Enter a value according to the dialog.

To enable the Start Phase or Stop Phase, select the [Start] or [Exit] check box in the [Phase] box and then enter a value as shown in Figure 5-8.

Display disabled

Phase

☐ Start [deg] 0.0

☐ Stop [deg] 0.0

Display enabled

Phase

☒ Start [deg] 0.0

☒ Stop [deg] 0.0

Figure 5-8 Setting of Start Phase and Stop Phase

To enable the trigger output, select the [Trigger Out] check box.

Select a combination of High and Low from the [Sync Code] combo box, which consists of 2 bits.

5.2.5 Graph

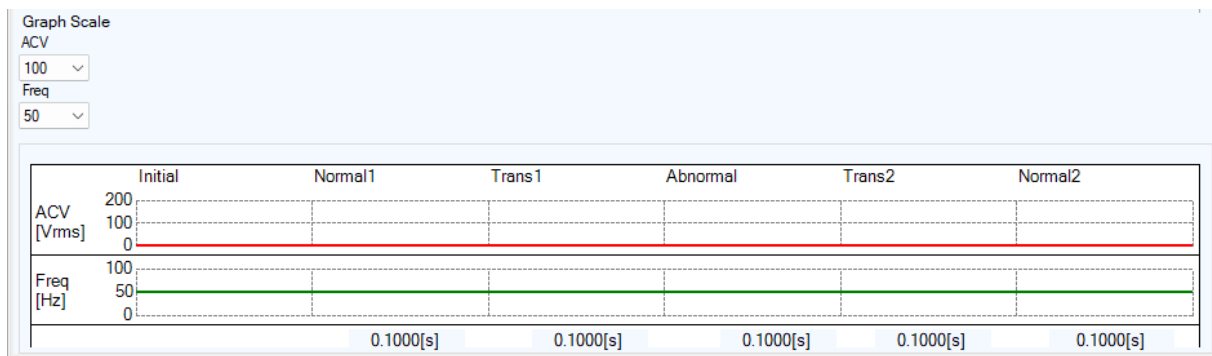


Figure 5-9 Graph

In the graph area, the setting value and variation of the AC voltage (ACV) and the frequency (Freq) are displayed as a graph. Select an appropriate scale from the [Graph Scale] drop-down list, depending on the setting values. A step time is displayed at the bottom of the graph.

5.2.6 Operation Bar

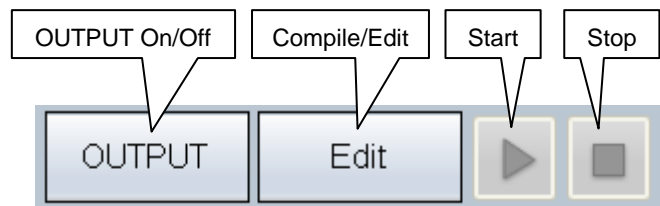


Figure 5-10 Operation Bar of the Simulation

In the Operation Bar of the simulation, you can operate Compile, Start, and Stop of the simulation in addition to switching the output on and off.

5.3 Simulation Setting File

There are the following two types of file format for the simulation data used by this software:

- Simulation setting file (extension is .sid)

This file can be read and saved by this software. It cannot be read by the DP power source.

- Simulation data file for the USB memory (extension is .sim)

It can be written (exported) by this software. After writing it to the dedicated folder for the USB memory, it can be read by the panel operation on the DP power source. It cannot be read by this software.

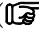
5.3.1 Save As

Saves the simulation setting file as a new file. The [Save As] dialog can be opened by any of the following two methods. For newly created data, the Save operation works as "Save As."

- From the Menu Bar, select [File] - [Save As].
- On the keyboard, press **Alt**, **F**, **A**.

5.3.2 Save

Overwrites and saves to the existing simulation setting file. Following four methods are available. For newly created data, the Save operation works as "Save As."

- From the Menu Bar, select [File] - [Save].
- On the keyboard, press **Alt**, **F**, **S**.
- On the keyboard, press **Ctrl** + **S**.
- On the Tool Bar, click the [Save] icon ( 5.2.2).

5.3.3 File Reading

Opens the simulation setting file. The Open File dialog can be opened by any of the following three methods.

- From the Menu Bar, select [File] - [Open].
- On the keyboard, press **Alt**, **F**, **O**.
- On the keyboard, press **Ctrl** + **O**.

5.3.4 Write to USB Memory (Export)

Writes a simulation data file for the USB memory. In this software, a data file is written to the appropriate level under the dedicated folder (NF_TOOL) to allow the DP power source to read it by simply specifying a USB memory drive. If the dedicated folder (NF_TOOL) does not exist in the USB memory, it is automatically created by this software upon writing a data file.

- Operation procedure

1. From the Menu Bar, select [File] - [Export]. The [Export] dialog appears.

2. In [USB Memory Drive], specify the drive to which the USB memory is connected.
3. In [File Name], specify the file name to be saved.
4. Select .

Notes

- A data file in the USB memory cannot be read from the DP power source whose configuration of model and phase is different from that of the system setting of this software that has been selected upon writing to the USB memory.
-

5.4 Control

This section describes how to control a start, stop, etc. of the simulation.

5.4.1 Start

Enabled only in the execution mode and with the output on. Following three methods are available.

- From the Menu Bar, select [Control] - [Start].
- On the keyboard, press **Alt**, **R**, **S**.
- In the Operation Bar, click [Start] button (☞ 5.2.6).

5.4.2 Stop

Following three methods are available.

- From the Menu Bar, select [Control] - [Stop].
- On the keyboard, press **Alt**, **R**, **E**.
- In the Operation Bar, click [Stop] button (☞ 5.2.6).

5.4.3 Output On

It is enabled only in the execution mode. Following three methods are available.

- From the Menu Bar, select [Control] - [Output ON].
- On the keyboard, press **Alt**, **R**, **N**.
- In the Operation Bar, click **OUTPUT** (☞ 5.2.6).

5.4.4 Output Off

Following three methods are available.

- From the Menu Bar, select [Control] - [Output OFF].
- On the keyboard, press **Alt**, **R**, **F**.
- In the Operation Bar, click **OUTPUT** (☞ 5.2.6).

5.4.5 Switch Execution Mode

Switches between the Edit mode and Execution mode. Switching the Edit mode to the Execution mode corresponds to the compile on the panel operation of the DP power source. Following two methods are available.

- From the Menu Bar, select [Control] - [Switch Mode].
- In the Operation Bar, click **Compile/Edit** (☞ 5.2.6).



6. Sequence

6.1	Name of Each Component in the Window.....	40
6.2	Operations on Each Section	41
6.3	Sequence Setting File	49
6.4	Control	51

6.1 Name of Each Component in the Window

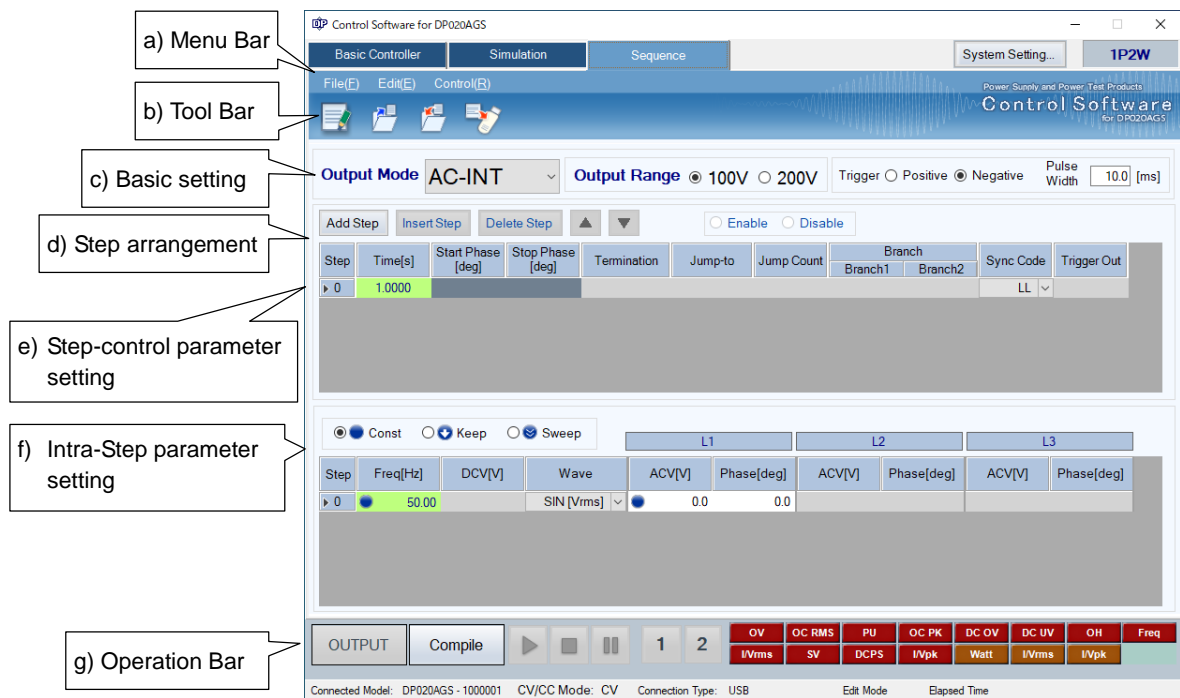


Figure 6-1 Sequence Window

- | | |
|-----------------------------------|-------|
| a) Menu Bar | 6.2.1 |
| b) Tool Bar | 6.2.2 |
| c) Basic setting | 6.2.3 |
| d) Step arrangement | 6.2.4 |
| e) Step-control parameter setting | 6.2.5 |
| f) Intra-Step parameter setting | 6.2.6 |
| g) Operation Bar | 6.2.7 |

6.2 Operations on Each Section

6.2.1 Menu Bar

File	New	Ctrl+N	← Creates a new sequence setting file
	Open	Ctrl+O	← Opens the sequence setting file
	Save	Ctrl+S	← Overwrites and saves the sequence setting file
	Save As		← Saves the sequence setting file using a new name
	Export		← Opens the Export File dialog
	Exit		← Exits the software
Edit	Copy	Ctrl+C	← Copies the selected parameter
	Paste	Ctrl+V	← Pastes the copied parameter
	Select All	Ctrl+A	← Makes all the parameters to selected status
	Initialize	Ctrl+I	← Initializes the selected parameter
	Add Step		← Adds a step
	Insert Step		← Inserts a step just above the selected step
	Delete Step		← Deletes the selected step
	Go Up		← Exchanges the selected step with the step above it
	Go Down		← Exchanges the selected step with the step below it
Control	Start		← Starts a sequence execution
	Stop		← Stops the sequence execution
	Hold		← Pauses the sequence execution
	Branch 1		← Goes to the step set on the branch 1
	Branch 2		← Goes to the step set on the branch 2
	Output ON		← Turns on the output of DP power source
	Output OFF		← Turns off the output of DP power source
	Switch Mode		← Switches between the Control Mode and the Edit Mode of this software

Figure 6-2 Menu Composition of Sequence

6.2.2 Tool Bar

On the Sequence Tool Bar, you just click each icon shown in Figure 6-3 to execute the corresponding function.

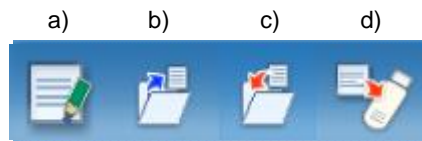


Figure 6-3 Sequence Tool Bar

- | | |
|-----------|---|
| a) New | Creates a new sequence setting. |
| b) Open | Opens the sequence setting file. |
| c) Save | Overwrites and saves the sequence setting file. |
| d) Export | Writes a sequence data file for the USB memory to the USB memory. |

6.2.3 Basic Setting

■ Output mode and Output range



Figure 6-4 Basic Setting (Output Mode and Output Range)

When the output mode or output range is changed, the dialog opens as shown in Figure 6-5. Select **Yes** to clear each of the current setting values (reset to the default values). The cleared setting cannot be undone. If you want to save the current setting before clearing it, select **No** to cancel the change and then save the setting to a file (see 6.3).

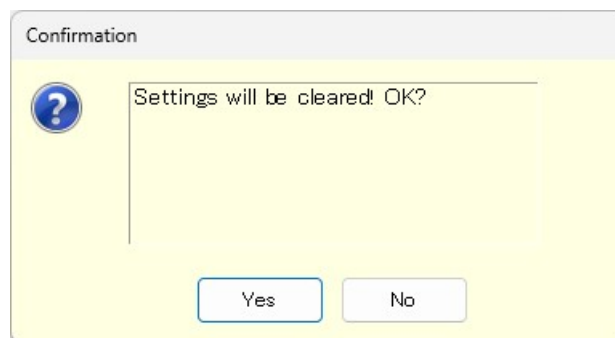


Figure 6-5 Confirmation Dialog for Clearing the Setting

When you change the output mode or output range setting, it may take some time until the setting is switched depending on the settings of the DP power source.

■ Trigger setting

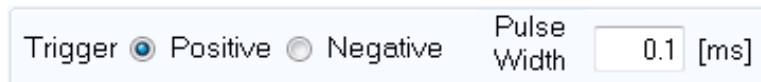


Figure 6-6 Basic Setting (Trigger Setting)

Select a polarity from [Positive] or [Negative] and then enter a pulse width. When you enter the pulse width, the software checks if the entered value is within the range. If the entered value is out of the range, the error dialog appears. Enter a value according to the dialog.

6.2.4 Step Arrangement

This section describes how to add, insert, delete, move, and copy a step (line).



Figure 6-7 Step Arrangement Buttons

Notes

- When the step number is changed for a step that is set as a jump-to step or branch step, the step number is automatically changed on the calling side of the jump or branching also, preserving the dependency between steps.
- When a step that is set as the destination of any jump-to step or branch step is deleted, the dialog as shown in Figure 6-8 appears. When you select **Yes**, the step is deleted and then the step number of the jump-to or branch step is automatically updated to the step number 0. If you select **No**, deletion of the step is canceled.

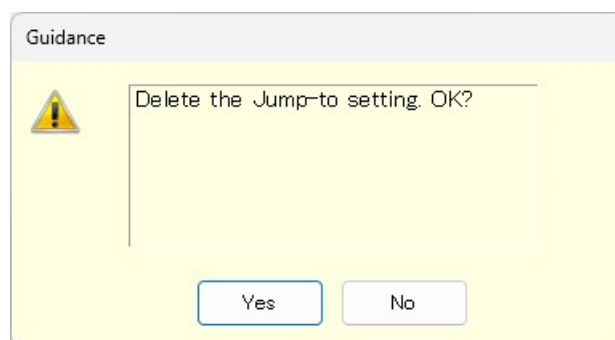


Figure 6-8 Confirmation Dialog for Deleting a Step

■ Add Step

Adds a new step after the last step (line). Following three methods are available.

- From the Menu Bar, select [Edit] - [Add Step].
- On the keyboard, press **Alt**, **E**, **S**.
- Click [Add Step] button of the step arrangement.

■ Insert Step

Adds a new step just above the current cursor step (line). Following three methods are available.

- From the Menu Bar, select [Edit] - [Insert Step].
- On the keyboard, press **Alt**, **E**, **I**.
- Click [Insert Step] button of the step arrangement.

■ Delete Step

Deletes the current cursor step (line). Following three methods are available.

- From the Menu Bar, select [Edit] - [Delete Step].
- On the keyboard, press **Alt**, **E**, **E**.
- Click [Delete Step] button of the step arrangement.

■ Go Up

Exchanges the current cursor step (line) with the step above it. Following three methods are available.

- From the Menu Bar, select [Edit] - [Go Up].
- On the keyboard, press **Alt**, **E**, **U**.
- Click [**▲**] button of the step arrangement.

■ Go Down

Exchanges the current cursor step (line) with the step below it. Following three methods are available.

- From the Menu Bar, select [Edit] - [Go Down].
- On the keyboard, press **Alt**, **E**, **D**.
- Click [**▼**] button of the step arrangement.

■ Copy

Copies the setting data in the selected line range or cell range to the Clip Board. Following three methods are available.

- From the Menu Bar, select [Edit] - [Copy].
- On the keyboard, press **Alt**, **E**, **C**.
- On the keyboard, press **Ctrl** + **C**.

■ Paste

Pastes the setting data on the clip board to the selected line range or cell range. Following three methods are available.

- From the Menu Bar, select [Edit] - [Paste].
- On the keyboard, press **Alt**, **E**, **P**.
- On the keyboard, press **Ctrl** + **V**.

Notes

- Row numbers and column items should be matched between the destination data range to be pasted and the source data range that was copied to the clip board. If the data ranges do not match, the error dialog shown in Figure 6-9 appears.

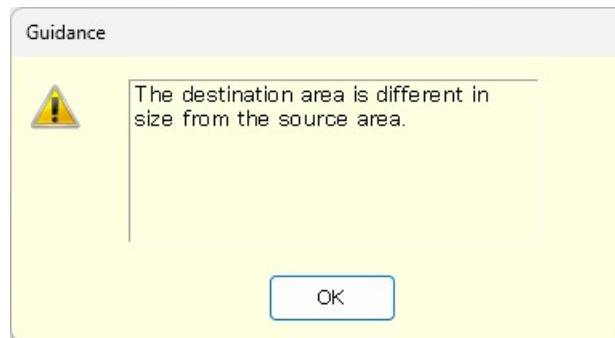


Figure 6-9 Error Dialog for Copying Data

6.2.5 Step-control Parameter Setting

■ Enter a setting value

Select a cell and then enter a value. If the entered value is out of the setting range, the error dialog appears. Enter a value according to the dialog.

Select [Termination], [Sync Code], or [Trigger Out] from the combo box opened by clicking a cell.

■ Entry of start phase and stop phase

When a cell of [Start Phase] or [Stop Phase] is selected, enable and disable radio buttons become enabled. If you select the [Enable] radio button, you can set a phase as shown in Figure 6-10.

■ Clear setting values

Restores a setting value to the default value. Following two methods are available.

- From the Menu Bar, select [Edit] - [Initialize].
- On the keyboard, press **Ctrl** + **I**.

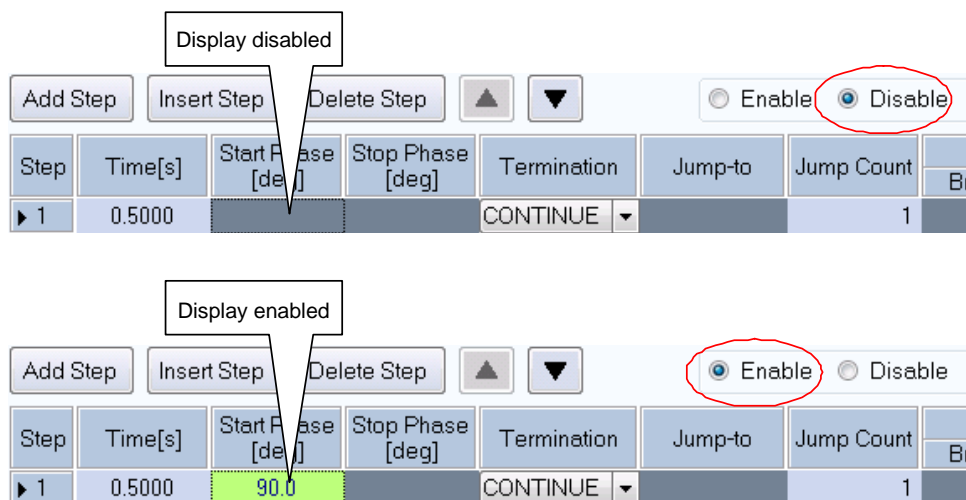


Figure 6-10 Enabling or Disabling Start Phase and Stop Phase

6.2.6 Intra-Step Parameter Setting

■ Enter a setting value

Select a cell and then enter a value. If the entered value is out of the setting range, the error dialog appears. Enter a value according to the dialog.

■ Enter behavior type

When a cell of the setting value in which you can set a behavior type is selected, radio buttons for the behavior type (Const, Keep, and Sweep) are enabled. A behavior type can be set by selecting the radio buttons (Figure 6-11). In the cell, the icon corresponding to the setting behavior type is displayed.

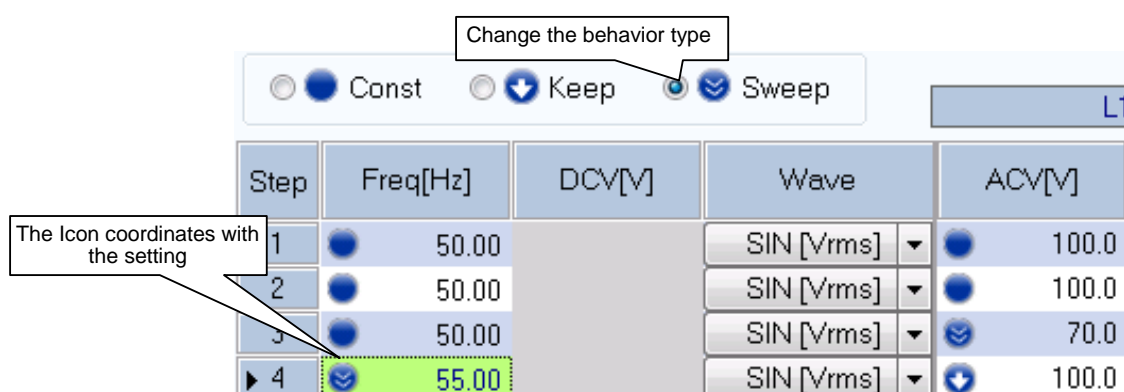


Figure 6-11 Set Behavior Type

6.2.7 Operation Bar

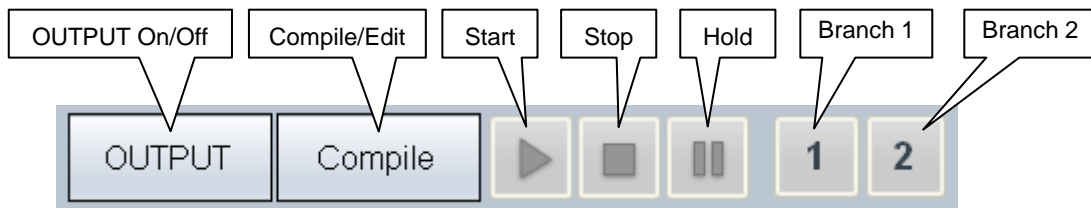


Figure 6-12 Operation Bar of Sequence

In the Operation Bar of the sequence, you can perform Compile, Start, Stop, Hold, Branch 1, and Branch 2 of the sequence in addition to switching the on/off of the output.

6.3 Sequence Setting File

There are the following two types of file format for the sequence data used by this software:

■ Sequence setting file (extension is .sqd)

This file can be read and saved by this software. It cannot be read by the DP power source.

■ Sequence data file for the USB memory (extension is .seq)

It can be written (exported) by this software. After writing it to the dedicated folder for the USB memory, it can be read by the panel operation on the DP power source. It cannot be read by this software.


6.3.1 Save As

Saves the sequence setting file as a new file. The [Save As] dialog can be opened by any of the following two methods. For newly created data, the Save operation works as "Save As."

- From the Menu Bar, select [File] - [Save As].
- On the keyboard, press **Alt**, **F**, **A**.

6.3.2 Save

Overwrites and saves to the existing sequence setting file. Following four methods are available. For newly created data, the Save operation works as "Save As."

- From the Menu Bar, select [File] - [Save].
- On the keyboard, press **Alt**, **F**, **S**.
- On the keyboard, press **Ctrl** + **S**.
- On the Tool Bar, click the [Save] icon ( 6.2.2).

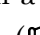
6.3.3 File Reading

Opens the sequence setting file. The Open File dialog can be opened by any of the following three methods.

- From the Menu Bar, select [File] - [Open].
- On the keyboard, press **Alt**, **F**, **O**.
- On the keyboard, press **Ctrl** + **O**.

----- Notes -----

● About CV/CC Mode setting

If the read DP power source setting file and the DP power source's settings are different, reading will be canceled and a message indicating that the parameters are different will be displayed. If such a message is showed, change the DP power source's settings in [System Setting] ( 3.6.3) and then try the read operation again.

6.3.4 Write to USB Memory (Export)

Writes a sequence data file for the USB memory. In this software, a data file is written to the appropriate level under the dedicated folder (NF_TOOL) to allow the DP power source to read it by simply specifying a USB memory drive. If the dedicated folder (NF_TOOL) does not exist in the USB memory, it is automatically created by this software upon writing a data file.

■ Operation procedure

1. From the Menu Bar, select [File] - [Export]. The [Export] dialog appears.
2. In [USB Memory Drive], specify the drive to which the USB memory is connected.
3. In [File Name], specify the file name to be saved.
4. Select .

----- Notes -----

- A data file in the USB memory cannot be read from the DP power source whose configuration of model and phase is different from that of the system setting of this software that has been selected upon writing to the USB memory.
-

6.4 Control

This section describes how to control a start, stop, etc. of the sequence.

6.4.1 Start

Enabled only in the execution mode and with the output on. Following three methods are available.

- From the Menu Bar, select [Control] - [Start].
- On the keyboard, press **Alt**, **R**, **S**.
- In the Operation Bar, click [Start] button (see 6.2.7).

6.4.2 Stop

Following three methods are available.

- From the Menu Bar, select [Control] - [Stop].
- On the keyboard, press **Alt**, **R**, **E**.
- In the Operation Bar, click [Stop] button (see 6.2.7).

6.4.3 Hold

Following three methods are available.

- From the Menu Bar, select [Control] - [Hold].
- On the keyboard, press **Alt**, **R**, **H**.
- In the Operation Bar, click [Hold] button (see 6.2.7).

6.4.4 Branch

Describes the branch 1. The branch 2 is similar to the branch 1. Following two methods are available.

- From the Menu Bar, select [Control] - [Branch 1].
- In the Operation Bar, click [Branch 1] button (see 6.2.7).

6.4.5 Output On

It is enabled only in the execution mode. Following three methods are available.

- From the Menu Bar, select [Control] - [Output ON].
- On the keyboard, press **Alt**, **R**, **N**.
- In the Operation Bar, click **OUTPUT** (see 6.2.7).

6.4.6 Output Off

Following three methods are available.

- From the Menu Bar, select [Control] - [Output OFF].
- On the keyboard, press **Alt**, **R**, **F**.
- In the Operation Bar, click **OUTPUT** (see 6.2.7).

6.4.7 Switch Execution Mode

Switches between the Edit mode and Execution mode. Switching the Edit mode to the Execution mode corresponds to the compile on the panel operation of the DP power source. Following two methods are available.

- From the Menu Bar, select [Control] - [Switch Mode].
- In the Operation Bar, click Compile/Edit (see 6.2.7).

7. Measurements Logging

7.1	Open or Close the Measurements Logging Window	54
7.2	Name of Each Component in the Window.....	54
7.3	Operations on Each Section	55
7.4	Log Display Section	57
7.5	Measurements Log File	57

7.1 Open or Close the Measurements Logging Window

7.1.1 Open the Measurements Logging Window

Following two methods are available.

- In the [Basic Controller] Menu Bar, select [Tool] - [Logging].
- Click [Logging] icon (🔧 4.2.2) on the [Basic Controller] Tool Bar.

7.1.2 Close the Measurements Logging Window

Click the ☒ in the upper right corner of the [Logging] window.

Notes

- Close the main window to also close the [Logging] window.

7.2 Name of Each Component in the Window

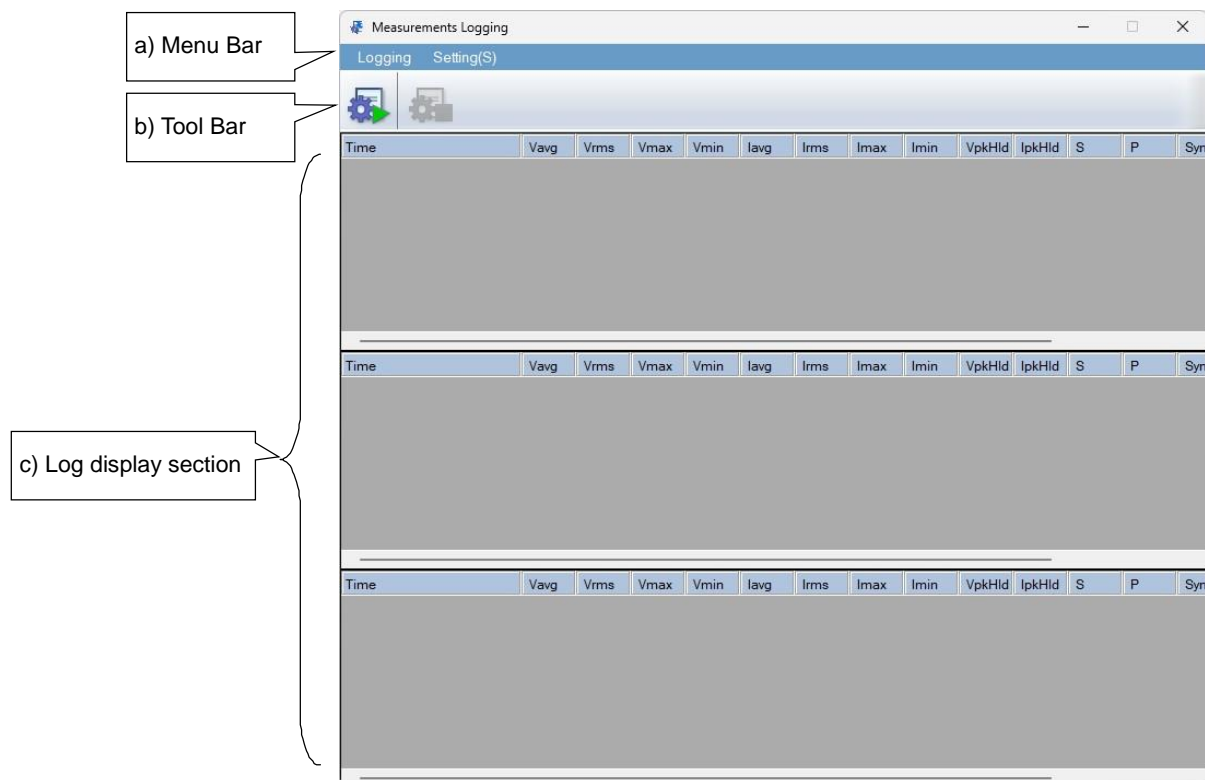


Figure 7-1 Measurements Logging Window

- | | |
|------------------------|---------|
| a) Menu Bar | 🔧 7.3.1 |
| b) Tool Bar | 🔧 7.3.2 |
| c) Log display section | 🔧 7.4 |

7.3 Operations on Each Section

7.3.1 Menu Bar

The menu composition of [Measurements Logging] is shown in Figure 7-2.

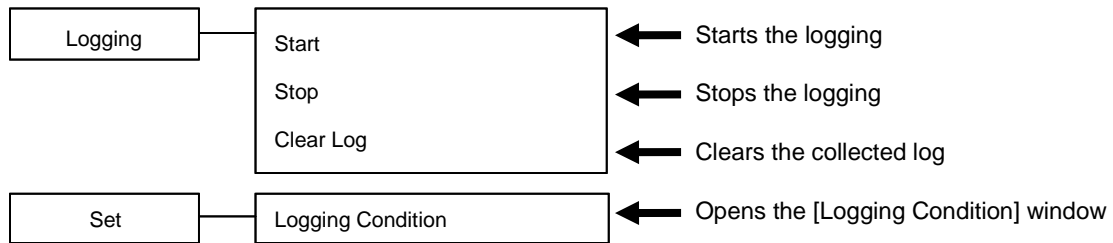


Figure 7-2 Menu Composition of the Measurements Logging

7.3.2 Tool Bar

On the [Measurements Logging] Tool Bar, you just click the icon shown in Figure 7-3 to execute the corresponding function.



Figure 7-3 Measurements Logging Tool Bar

- | | | |
|----|---------------|---------------------|
| a) | Start Logging | Starts the logging. |
| b) | Stop Logging | Stops the logging. |

7.3.3 Start, Stop, and Clear

■ Start

Following two methods are available.

- From the Menu Bar, select [Logging] - [Start].
- From the Tool Bar, select [Start Logging] icon.

Notes

- Collection of the line voltage measurements is not supported.
- Collection of the harmonic current measurements is not supported.
- Collection of the harmonic voltage measurements is not supported.

■ Stop

Following two methods are available.

- From the Menu Bar, select [Logging] - [Stop].
- From the Tool Bar, select Stop Logging icon.

■ Clear Log

From the Menu Bar, select [Logging] - [Clear Log] to clear logs in the [Measurements Logging] window. The logged data in the logging file are not cleared.

7.3.4 Logging Conditions

Sets the measurements log file and a logging interval. From the Menu Bar, select [Set] - [Logging Condition] to display the [Logging Setting] dialog.

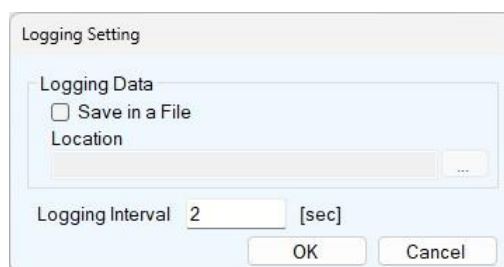


Figure 7-4 Logging Setting Dialog

■ Save in a File

When the [Save in a File] check box is selected, the measurements log file is created and saved to the folder specified in [Location] (see 7.5).

■ Location

Specifies a folder to save the measurements log file.

■ Logging Interval

Specifies the interval of measurements logging in seconds. The range of the value is between 1 to 60.

----- Notes -----

- The accuracy of the logging interval is not guaranteed.

7.4 Log Display Section

When the logging is started, a log for each line is created in the log display section with the specified interval. Clear Log operation (☞ 7.3.3) clears the logs in the log display section.

----- Notes -----

- Data in the log display section cannot be copied to the clip board or saved to a file. If you need to keep the log in a file, select the [Save in a File] check box in the [Logging Setting] dialog (☞ 7.3.4) and use the measurements log file.

7.5 Measurements Log File

When the [Save in a File] check box is selected in the [Logging Setting] dialog (☞ 7.3.4), starting a logging creates a measurements log file in the folder specified in [Location] and appends a log to the log file. The format of the measurements log file is described below.

■ File name

The file is created with the name of YYYYMMDD_HH_MM_SS.txt based on the time when the logging is started.

■ File format

Text file delimited by comma. The first line includes the item names and the subsequent lines represent measurements logs.

----- Notes -----

- Logging data displayed on a window or saved in a file is up to 3600 lines. If logging data exceeds 3600 lines, displayed data will be wrapped around and a new file will be created. Excess data will be saved in the new file.
- Logging may stop if there is not enough empty space in the hard disc.

8. Maintenance

8.1	Check Version	60
-----	---------------------	----

8.1 Check Version

The version of this software is displayed in the upper right of the dialog window which appears when you click **System Setting** button.

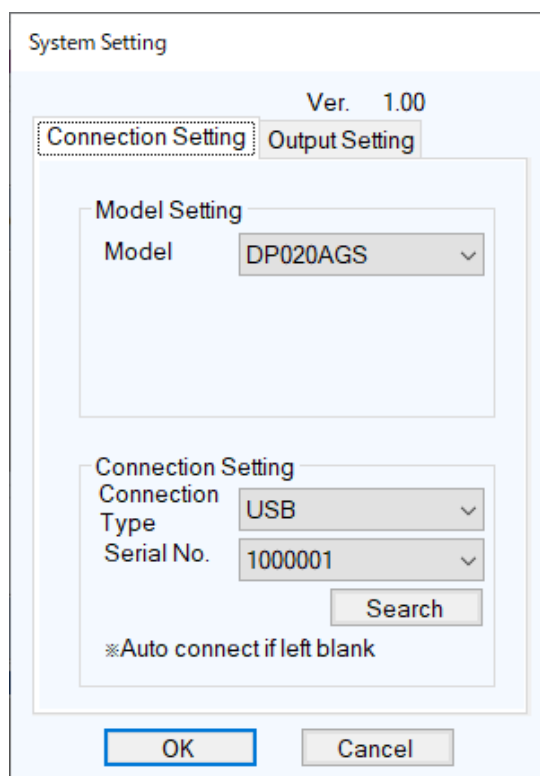


Figure 8-1 System Setting Dialog Window

NOTES

- No part of the contents of this instruction manual may be reprinted or reproduced without prior permission from us.
- The information in this instruction manual is subject to change without notice.
- We have taken enough care upon creating this instruction manual. However, should you notice any doubtful or wrong statement, or lack of description, please contact us or our agent.

Control Software for DP020AGS Instruction Manual

NF Corporation

6-3-20 Tsunashima Higashi, Kohoku-ku, Yokohama 223-8508, Japan

Phone: +81-45-545-8128 (Main)

<https://www.nfcorp.co.jp/english/>

© Copyright 2024, **NF Corporation**

